

METRO NETWORK IMPROVEMENTS

LIME STREET - LONDON ROAD - MONUMENT PLACE - LOW HILL – BOARD 1



Welcome

Liverpool City Region Combined Authority and Liverpool City Council welcome you to this public consultation event. We are holding this consultation to present our active travel, public space and bus improvement proposals for the area between Lime Street, London Road and Low Hill. This includes the area known as Monument Place outside the old TJ Hughes building. We are seeking your feedback on the plans.





Background to the proposals – Metro Network

We know that a modern, effective transport system is what defines great international city regions, connecting people to work, education, public services and leisure, and keeping our communities connected.

Sustainable travel is at the centre of this, and our vision is to deliver improvements to enhance travel by bus and create a safer walking, wheeling and cycling network.

What is sustainable travel and why are we promoting it?

Sustainable travel means ways of moving around that reduce environmental impact, promote healthier lifestyles, and support more efficient transport systems. They include:

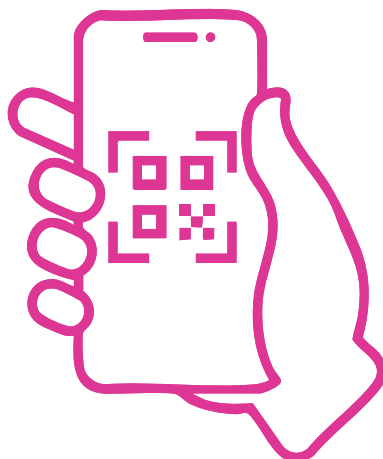
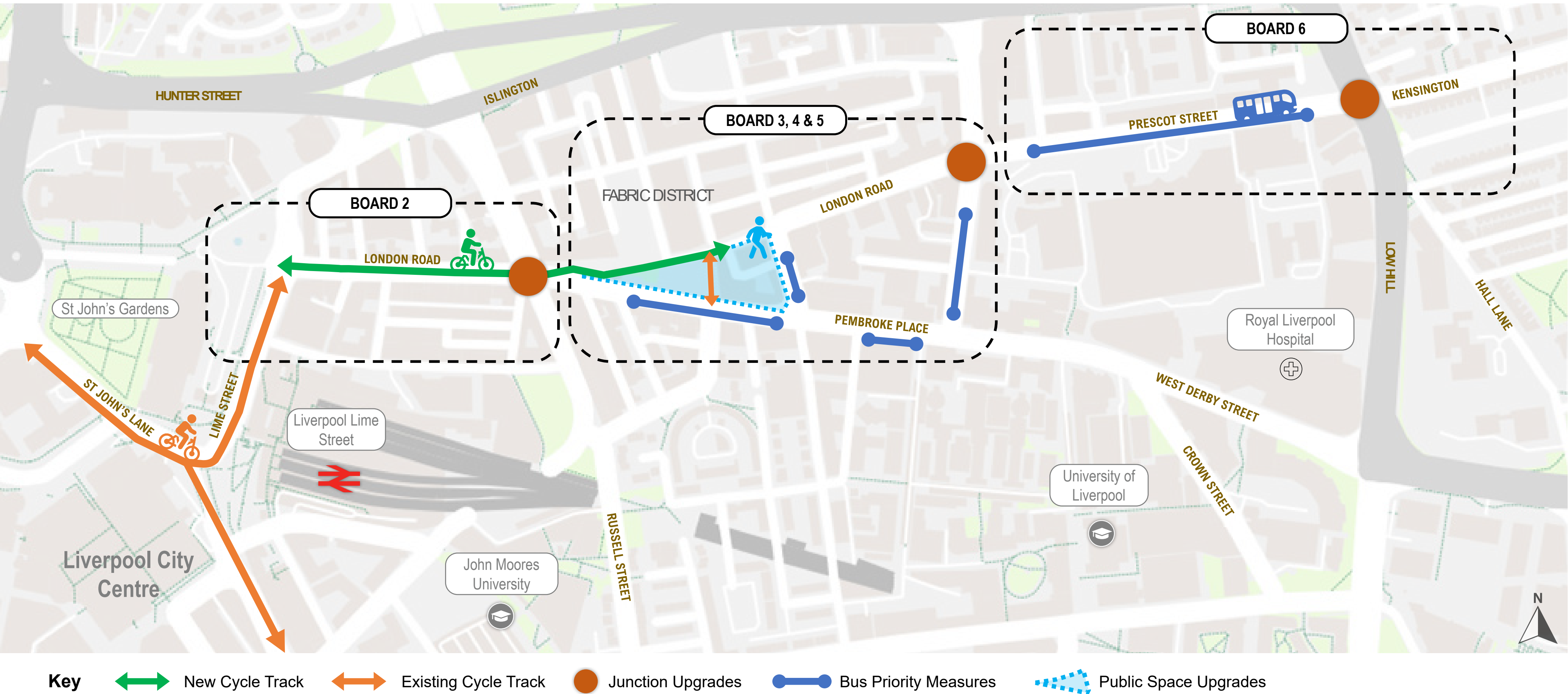
-  **Walking** – The most sustainable option, requiring no fuel, promoting activity and health.
-  **Wheeling** – An alternative to foot/pedestrian-based mobility. Includes wheeled mobilities such as manual self- or assistant-propelled wheelchairs
-  **Cycling** – An active, efficient, low-emission mode that also improves fitness.
-  **Public transport** – Buses and trains move many people at once, reducing congestion and emissions.

Improvements to transport options locally can encourage more people to travel sustainably and ultimately contribute to the Mayoral commitment of LCR Net Zero Carbon by 2040.

Have your say and comment on the proposals

We want to hear what you think about our schemes. There are several ways you can comment:

- » Complete the **online survey** at <https://lcrlistens.liverpoolcityregion-ca.gov.uk/> or scan the **QR code** below to have your say now.
- » Complete a survey at one of the **drop-in consultation events**:
 - **Tuesday 17th June** – 15:00 – 19:00
The Tapestry, 68-74 Kempston Street, L3 8NG
 - **Saturday 28th June** – 10:00 – 14:00
Liverpool Central Library, William Brown Street, L3 8EW



PLEASE SCAN THE QR CODE
TO HAVE YOUR SAY NOW

METRO NETWORK IMPROVEMENTS

LIME STREET - LONDON ROAD - MONUMENT PLACE - LOW HILL – BOARD 2



London Road is an important route into and out of the city, connecting Lime Street with the Fabric District, the University and Low Hill.

What are the proposals?

- New fully-segregated two-way cycle track on London Road towards Monument Place, connecting the Lime Street cycle track outside St. Georges Hall.
- Upgraded road crossing facilities suitable for walking, wheeling and cycling at the junction of Norton Street.
- Improved quality and consistency of carriageway and surfacing, with removal of potholes.
- Continuous footways at side road crossings which give priority to pedestrians over vehicles turning.
- New bus shelter to provide better waiting facilities for passengers and improved footways for local access.

What are the benefits?

- Safer walking, wheeling and cycling provision on London Road, separated from general traffic.
- Better quality walking wheeling and cycling connections to the city centre via Lime Street, the Fabric District, Monument Place and University Campus.
- Health and well-being benefits associated with travelling by sustainable modes and being active.



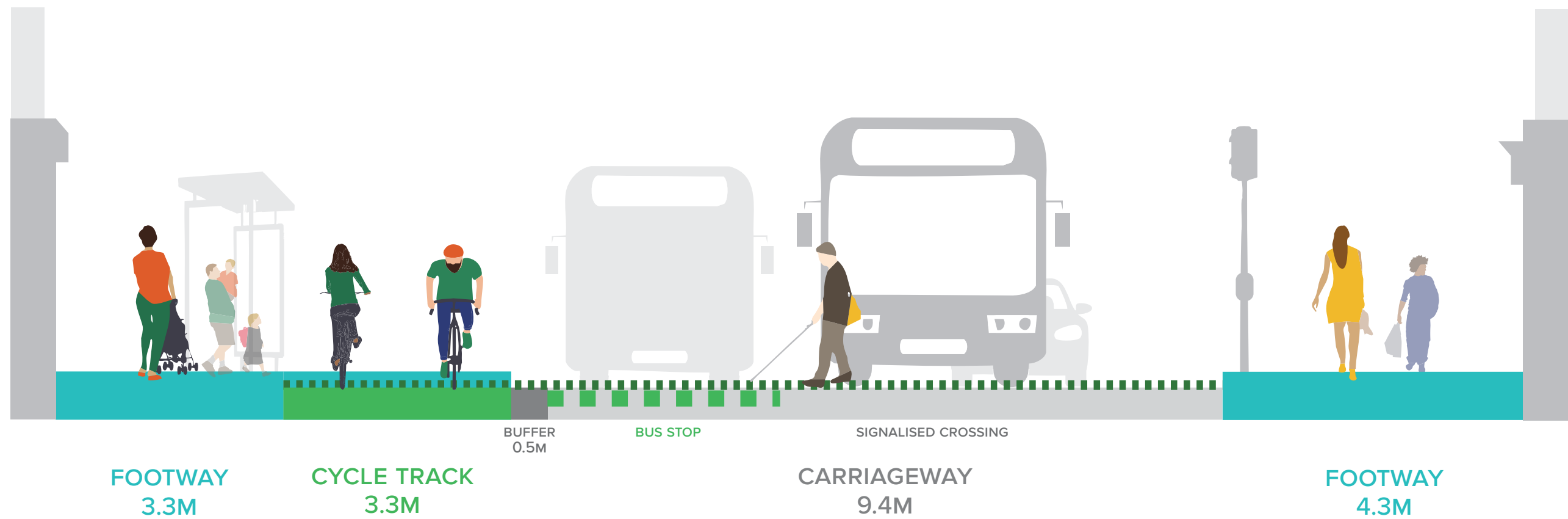
Key New Cycle Track Existing Cycle Track Junction Upgrades Bus Stop On Route Photo Location



Photo: London Road

What is a bus stop boarder?

A “bus stop boarder” refers to a type of bus stop design where a cycle track runs directly alongside the bus stop and bus passengers must cross the cycle track to board and alight the bus. Essentially, it’s a bus stop that’s integrated into a cycle route, requiring cyclists to give way to pedestrians boarding or alighting the bus.



METRO NETWORK IMPROVEMENTS

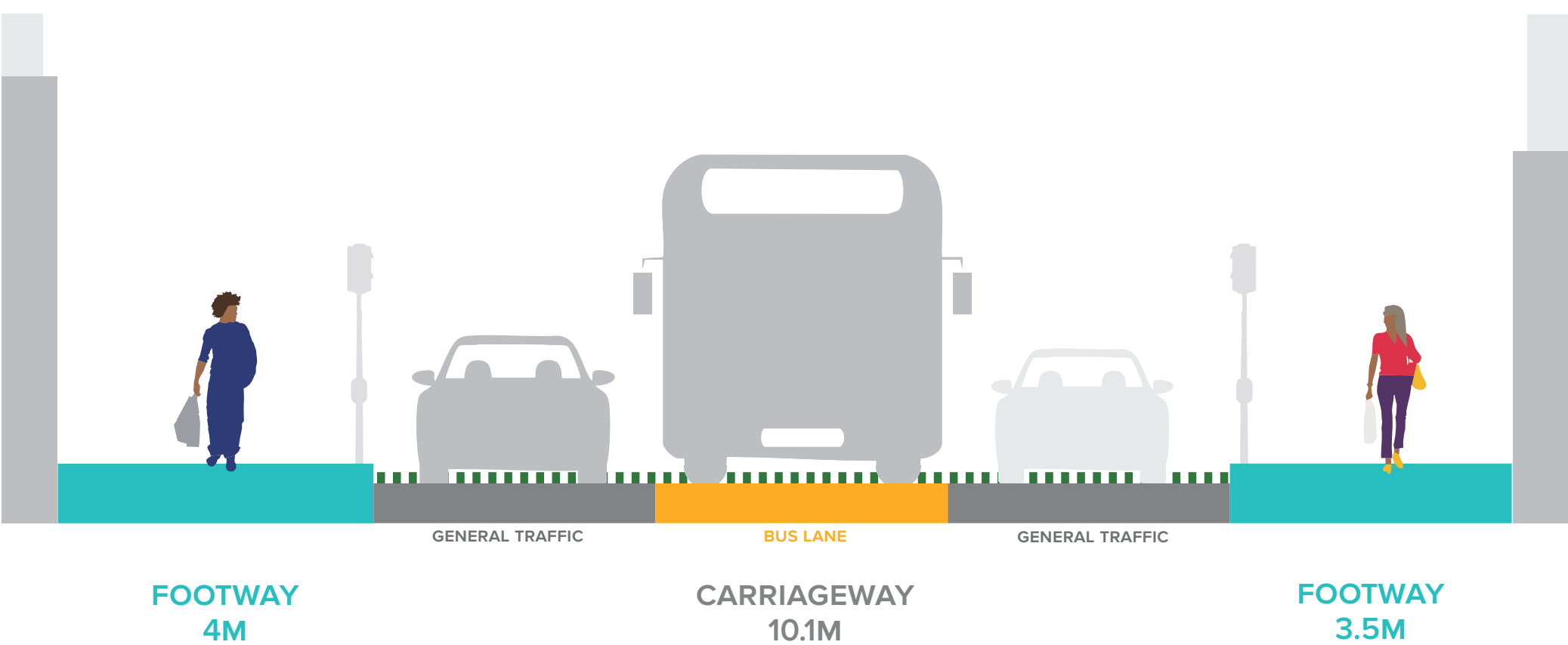
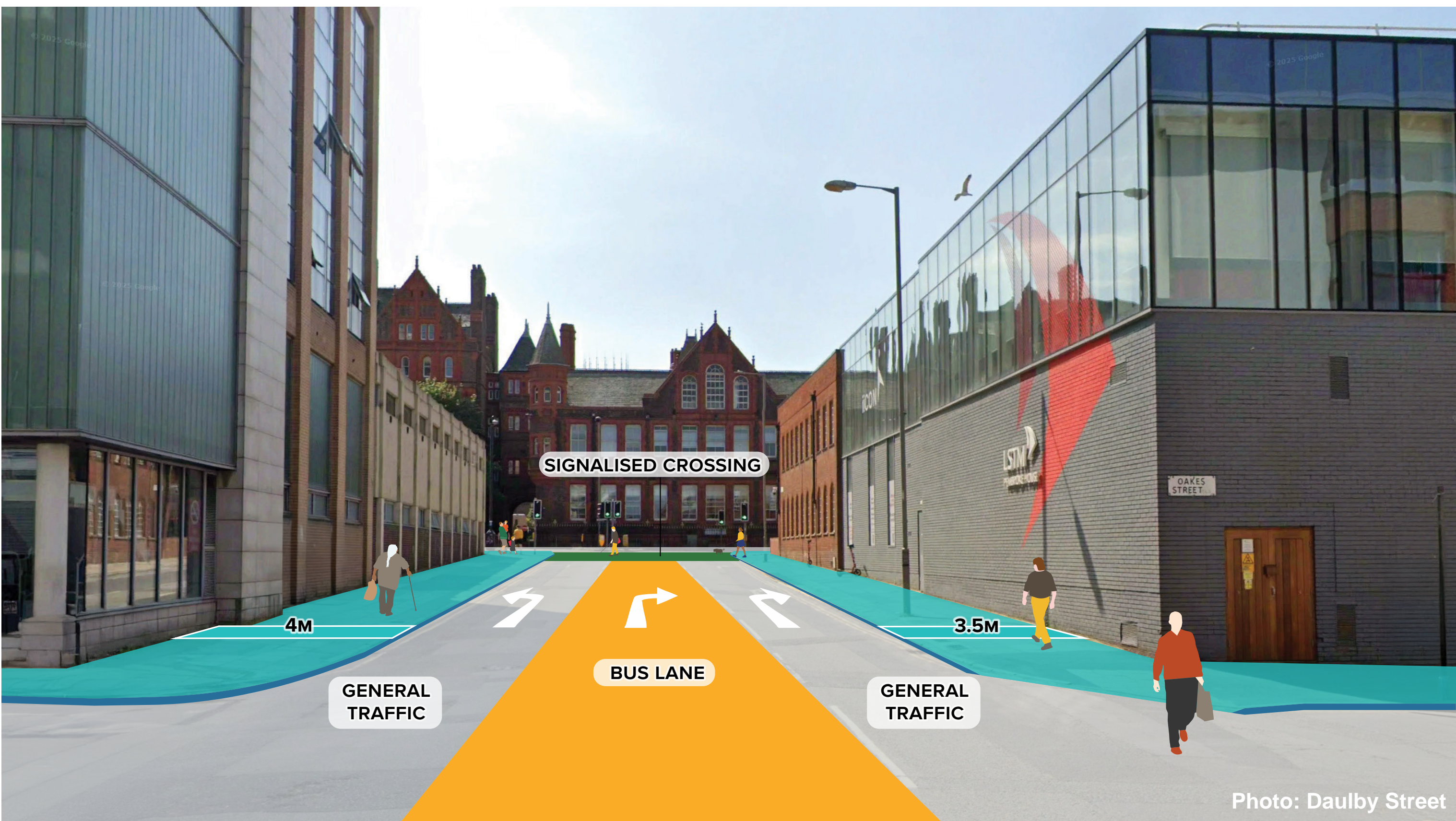
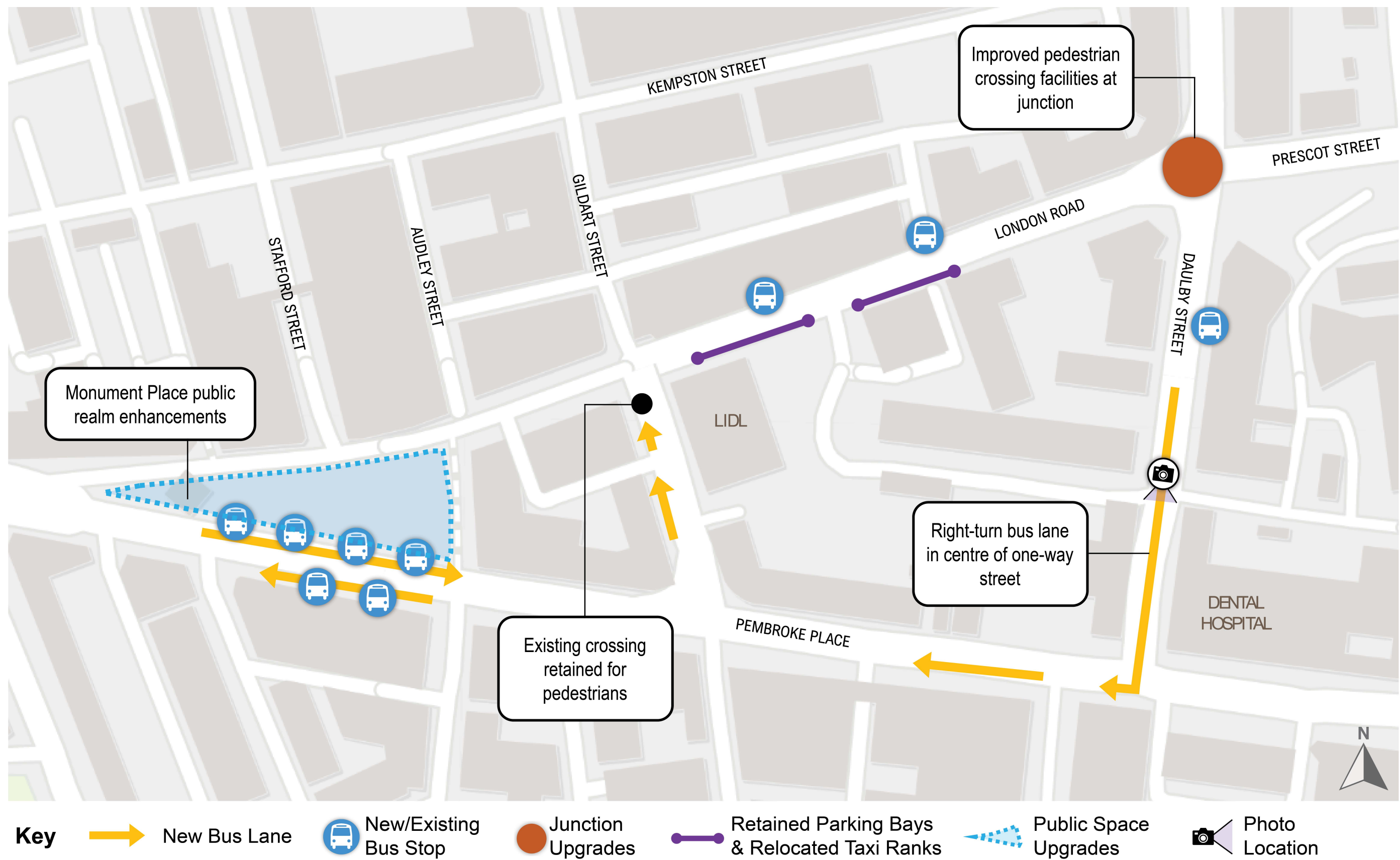
LIME STREET - LONDON ROAD - MONUMENT PLACE - LOW HILL – BOARD 3

What are the proposals?

- Walking, wheeling and cycling connections through a revamped Monument Place, as outlined on the following pages.
- New bus lane facilities on London Road, Anson Street and Daulby Street, giving buses priority over general traffic.
- Upgrades to the junction of London Road / Prescott Street / Moss Street / Daulby Street, with improved pedestrian crossing facilities across each section.
- Lanes retained for general traffic whilst giving buses priority at key sections.
- See boards 5 and 6 for Monument Place public space improvement proposals.

What are the benefits?

- Priority for buses which can contribute to better reliability of services where buses can bypass general traffic and queuing.
- An enhanced environment and comfort for pedestrians, with road crossing upgrades to make it easier to cross on foot.
- On street parking retained on London Road for access to local shops and services - though part of it will be used for the relocated taxi rank.
- The potential to reduce carbon emissions by encouraging more people by sustainable modes of travel.



METRO NETWORK IMPROVEMENTS

LIME STREET - LONDON ROAD - MONUMENT PLACE - LOW HILL – BOARD 4



What are the proposals?

At Monument Place, the Showcase Square (1) provides a flexible event space, with smaller areas like the Workbench (2) and Break Rooms (3) offering green, social spaces. Other features include:

- The Bandstand (4) which serves as a sculptural focal point and multifunctional space – providing seating, play or stage space.
- The northern and eastern edges of Monument Place space are designed so that people can spill out in the surrounding area (5) whilst providing clear routes to key destinations such as bus stops.
- A new segregated two-way cycle track (6) runs along London Road through Monument Place into the existing cycle track (7).
- Gateway spaces (8) are found at the eastern and western edges providing clear pedestrian crossing points and signage around the space.
- The bus stops waiting area (9) is upgraded with new planting and greenery.
- Timed servicing access is introduced on Stafford Street (10) to help create a safer, more welcoming public space.

Proposals for Monument Place are subject to funding approvals.

What are the benefits?

- Monument Place is a more inclusive, multi-functional and inviting space. It is designed to support different ways of travelling - whether walking, wheeling, cycling or catching the bus.
- The proposal introduces greenery for residents and visitors to enjoy, enhancing both the visual and environmental quality of the space.
- The area is not just a space to move through, but a place for people to stop, gather and enjoy - in a safe, flexible, and accessible setting.



METRO NETWORK IMPROVEMENTS

LIME STREET - LONDON ROAD - MONUMENT PLACE - LOW HILL – BOARD 5

Funded by
UK Government



METROMAYOR
LIVERPOOL CITY REGION



LCR
LISTENS



Playful Features



Versatile Seating



Trees & Planting



Space for Markets & Events

Key

- 1. Showcase Square
- 2. The Workbench
- 3. The Break Rooms
- 4. The Bandstand
- 5. Building Spill-out
- 6. Proposed two-way Cycle Track
- 7. Realigned two-way Cycle Track
- 8. Gateway Spaces
- 9. Bus Waiting Area
- 10. Service Route

METRO NETWORK IMPROVEMENTS

LIME STREET - LONDON ROAD - MONUMENT PLACE - LOW HILL – BOARD 6



What are the proposals?

- Priority for buses on sections of Prescott Street in both directions.
- An improved pedestrian crossing on Prescott Street at the Low Hill junction.
- Cycle crossing upgrades at the junction of Kensington and Low Hill.
- Removal of on-street parking sections on Prescott Street where bus lane implemented.
- Two-way lanes retained for general traffic on Prescott Street.
- Cyclist permitted use of bus lanes to avoid general traffic.

What are the benefits?

- A more efficient and reliable route for buses into and out of town, with priority over general traffic on some sections.
- Safer and more efficient pedestrian crossing of Prescott Street, providing better access to the new Liverpool Royal Hospital site.
- Improved north-south links towards the hospital and university.



Which bus services use this route?



- | | |
|------------------------------|-------------------------------|
| 8, 8E – Huyton | 17, 17A, 17X – Fazakerley |
| 9 – Huyton | 18 – Croxteth Park |
| 10A, 10Q – St Helens | 19 – Knowsley Industrial Park |
| 10B, 10S – Huyton | 21 – Northwood |
| 12, 13 – Stockbridge Village | 61 – Halton Hospital |
| 14, 14A, 14B – Kirkby | 76 – Halewood |
| 14X – Croxteth / Kirkby | 78 – Halewood |
| 15 – Huyton | 79C – Murdishaw |

