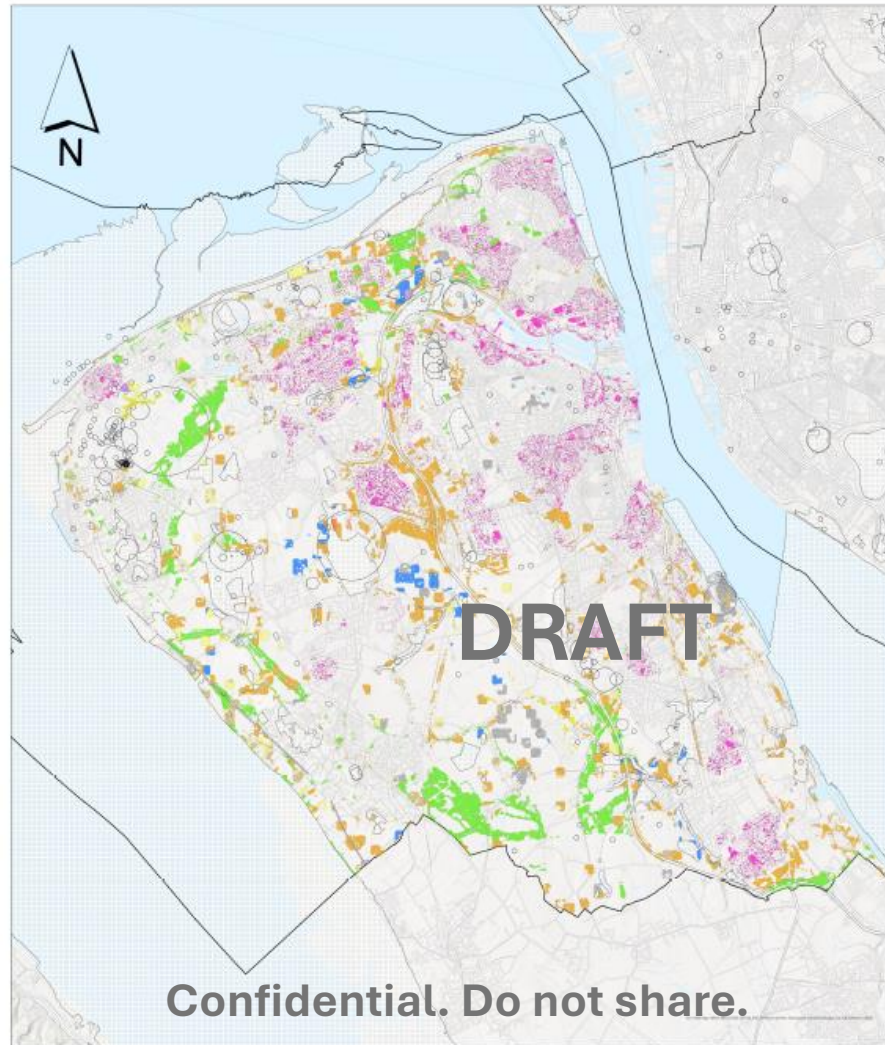


Wirral Local Planning Authority



0 2 4 8 Kilometers

Primary Measure ID

- | | |
|--|---|
| 11a - Create grassland | 27a - Red squirrel woodland creation |
| 15a - Create woodland (incl. urban street trees) | 28b - Natterjack habitat creation |
| 17d - Create wildlife rich urban spaces | 29b - Create reptile corridors |
| 18a - Integrate GI into developments | 32a - Plant female black poplar |
| 1a - Create wetlands (incl. wet woodland) | 34a - Reduce light pollution for bats |
| 22a - Land management for farmland birds | 36a - Safeguard areas for ground-nesting birds |
| 23b - Buffer sensitive farmland habitats | Stakeholder Opportunity Sites |
| 25a - Create hedges and ditches | Areas of Particular Importance for Biodiversity (APIBs) |
| | LA Boundaries |